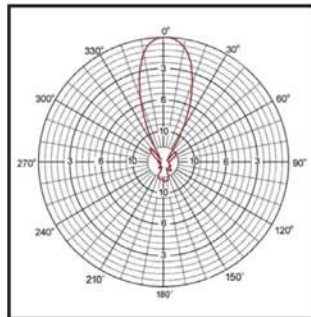


## >> YAGI ANTENNA / 800-900 MHz / 14dBi

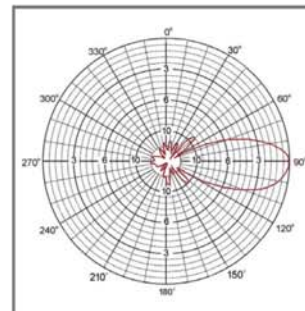
### Specifications

Gain	14 dBi
VSWR	<1.5 : 1
Horizontal Beamwidth	34°
Vertical Beamwidth	30°
Polarization	Vertical
Maximum Input Power	100 Watts
Electrical Downtilt	0°
Front-back Ratio	>16 dB
Number of Elements	13
Connector	N-Female
Lightning Protection	Direct Ground
Rated Wind Speed	134 mph / (60 m/s)
Max. Dimensions of Antenna	2.2" x 7.3" x 54.3" / (55.8 x 185.72 x 1379.22 mm)
Weight of Antenna	2.2 lb. / (0.998 Kg)
Mounting Hardware	U-Bolt
Included Mounting Hardware fits	1 7/8" OD Pipe

### Typical Radiation Patterns



Horizontal



Vertical

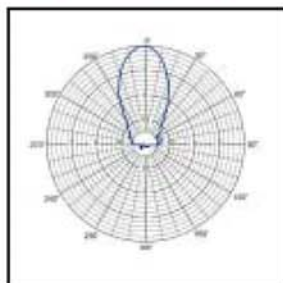


## >> CORNER REFLECTOR ANTENNA Wide Band / PCS

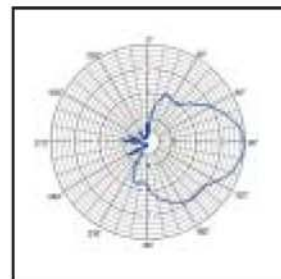
### Specifications

Gain	14 dBi
VSWR	<1.5 : 1
Horizontal Beamwidth	33°
Vertical Beamwidth	35°
Polarization	Vertical
Maximum Input Power	100 Watts
Electrical Downtilt	0°
Front-back Ratio	>30 dB
Lightning Protection	Direct Ground
Rated Wind Speed	124.3 mph (200.04 kph)
Installation Position Adjustment	
Horizontal	360°
Angle of Pitch	0-15°
Connector	N-Female
Dimensions	12.13" x 15.33" x 7.34" / (308.10 x 389.38 x 186.44 mm)
Weight	4.5 lbs / (2.04 Kg)
Radome Material	Fiberglass
Mounting Hardware Included	Yes

### Radiation Patterns

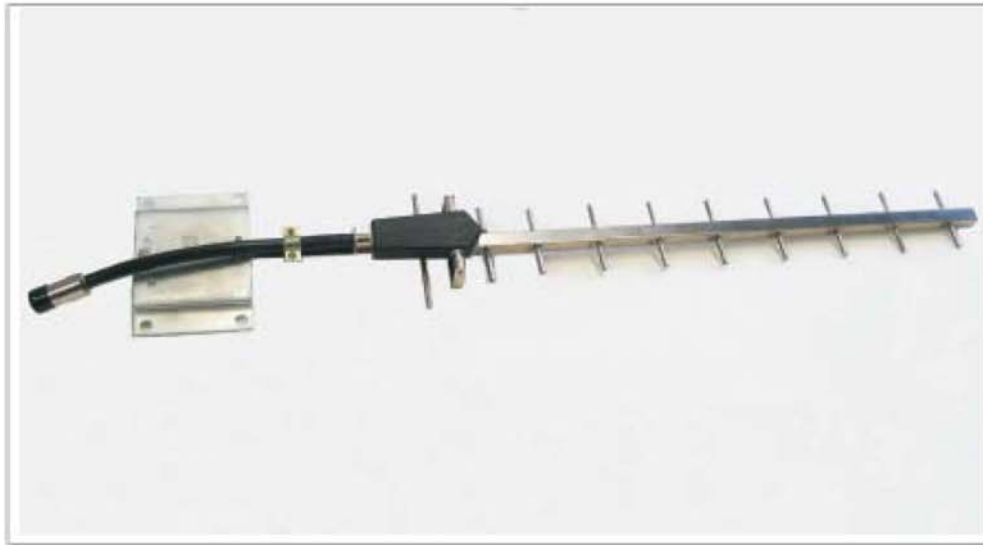


Horizontal



Vertical

...closing the gap

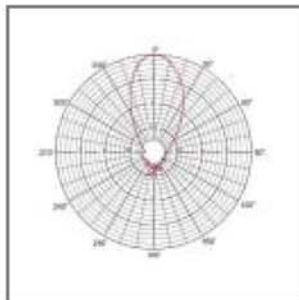


## >> YAGI ANTENNA / PCS

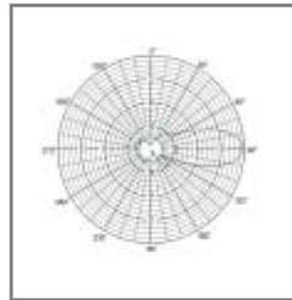
### Specifications

Gain	10 dBi
VSWR	<1.5 : 1
Horizontal Beamwidth	38°
Vertical Beamwidth	36°
Polarization	Vertical/Horizontal
Maximum Input Power	200 Watts
Electrical Downtilt	0°
Front-back Ratio	>16 dB
Number of Elements	11
Connector	N-Female
Lightning Protection	Direct Ground
Rated Wind Speed	120 mph (193.12 kph)
Dimensions	26.69" x 4.88" x 1.60" / (677.93 x 123.95 x 40.64 mm)
Weight of Antenna	1 lb. (0.454 Kg)
Mounting Hardware	U-Bolt
Included Mounting Hardware fits 1 7/8" OD Pipe	

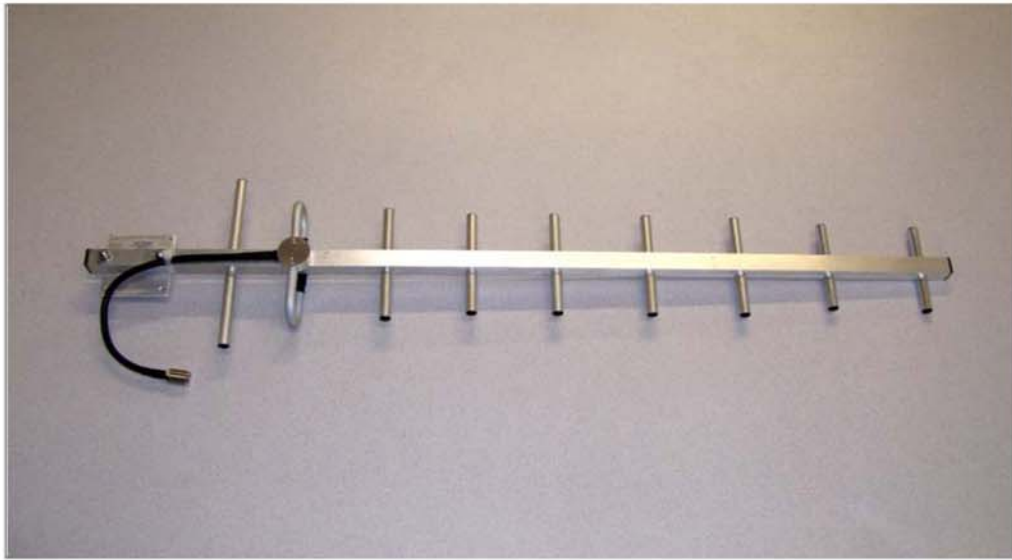
### Radiation Patterns



Horizontal



Vertical

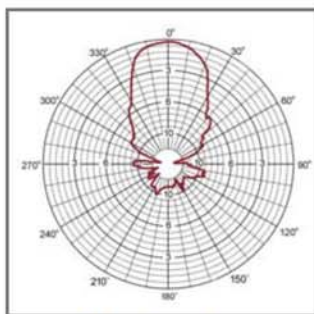


## >> YAGI ANTENNA / 700MHz / 11 dBi

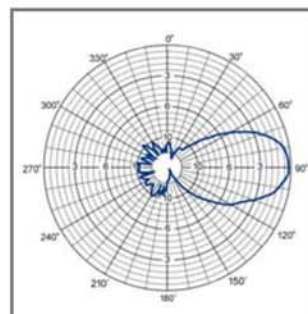
### Specifications

Gain	11 dBi
VSWR	<1.5 : 1
Horizontal Beamwidth	48°
Vertical Beamwidth	42°
Polarization	Vertical
Maximum Input Power	100 Watts
Electrical Downtilt	0°
Front-back Ratio	>16 dB
Number of Elements	8
Connector	N-Female
Lightning Protection	Direct Ground
Rated Wind Speed	134 mph / (216 Kph)
Max. Dimensions of Antenna	2.2" x 7.3" x 54.3" / (55.8 x 185.72 x 1379.22 mm)
Weight of Antenna	1.76 lb. / (0.8 Kg)
Mounting Hardware	U-Bolt
Included Mounting Hardware fits	1 7/8" OD Pipe

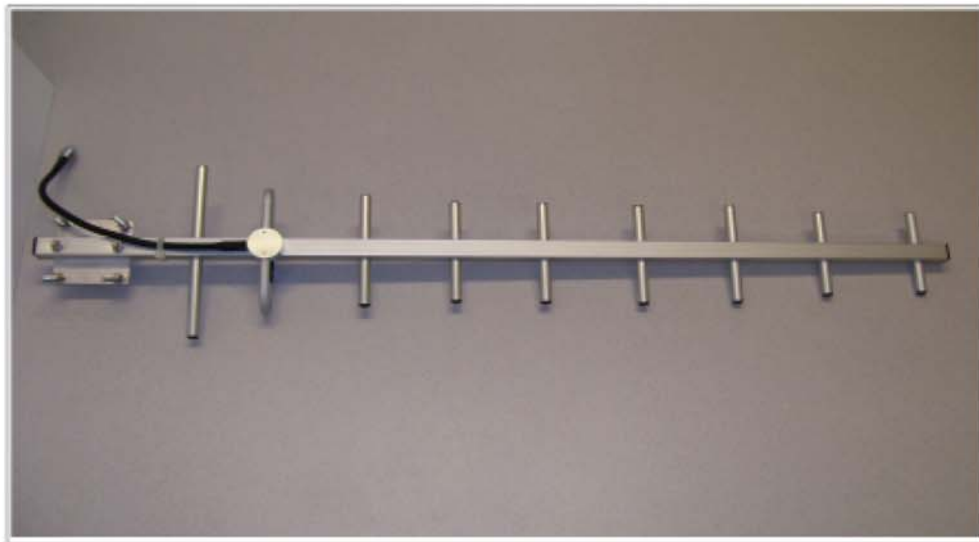
### Typical Radiation Patterns



Horizontal



Vertical

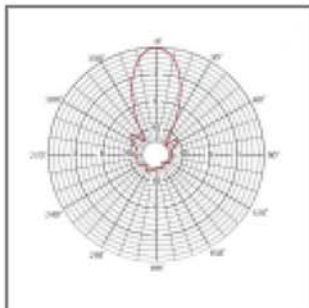


## >> YAGI ANTENNA / 800-900 MHz / 11dBi

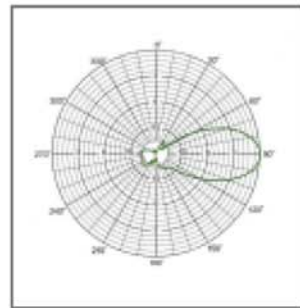
### Specifications

Gain	11 dBi
VSWR	<1.5 : 1
Horizontal Beamwidth	45°-50°
Vertical Beamwidth	35°-40°
Polarization	Vertical
Maximum Input Power	100 Watts
Electrical Downtilt	0°
Front-back Ratio	>12 dB
Number of Elements	9
Connector	N-Female
Lightning Protection	Direct Ground
Rated Wind Speed	134 mph / (216 kph)
Max. Dimensions of Antenna	37.5" x 8.0" x 2.2" / (952.5 x 203.2 x 55.9 mm)
Max. Weight of Antenna	1.43 lb. / (0.60 Kg)
Mounting Hardware	Stainless Steel
Included Mounting Hardware fits 1.18" - 2.36" / (30-60 mm) OD Pipe	

### Typical Radiation Patterns



Horizontal



Vertical